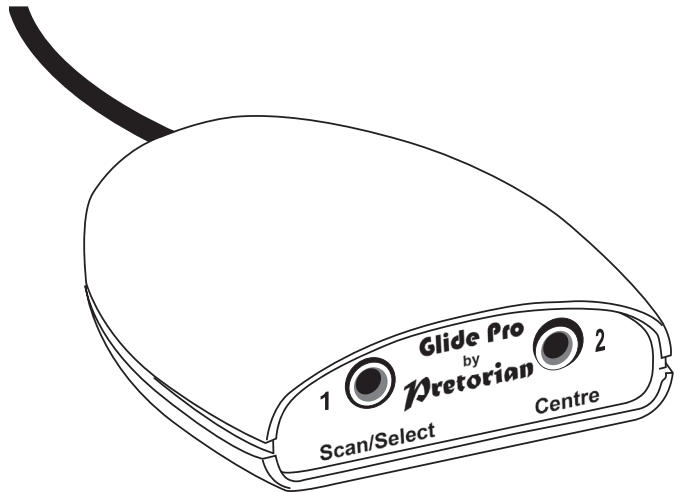


INSTRUCTIONS

Glide Pro Mouse Alternative



Pack Contents

Carefully check the contents of the box, which are:

Glide Pro unit

This manual

Product Description

Glide Pro is a simple, convenient way to use a switch to navigate almost any computer using the cursor.

- Full navigation using a single switch.
- Automatically adapts to any screen size and aspect ratio.
- Variable cursor speed
- Choice of Click settings
- USB connectivity
- PC, Mac, Chromebook and iOS/ Android tablet and phone compatibility
- Supports one or two switches.

Compatibility

Glide Pro is compatible with all PC, Mac and Chromebook platforms fitted with a USB socket. It may also be used with many phones and tablet devices but usually requires an adapter cable. Your hardware retailer will be able to advise on suitable adapter cables. Note that some platforms, especially Apple devices, have similar features built into the operating system.

Installation

Ensure your computer is fully turned on and booted up. Locate a spare USB socket on your computer and plug in **Glide Pro**, using a suitable adapter where necessary. The unit will be recognised automatically, and the relevant drivers loaded. Most computers will tell you when installation is complete, depending upon which operating system is installed.

You may need an adapter plug for some computers or tablets. These are readily available from electrical retailers.

For PCs, the next step is to download a free-of-charge utility from Microsoft which can turn the cursor into a crosshair. Although not essential to the operation of your **Glide Pro**, it is highly recommended. Please either follow the QR code or search for Microsoft PowerToys on the Microsoft app store and click on 'Install'. You must have Windows 10 or 11 installed. Once the utility has been installed, there is no need to open it.



Microsoft PowerToys

On a Mac or Chromebook, there are cursor utilities that can give a crosshair, such as *myPoint Light S* on the Apple App Store (paid app) or *Custom Cursor for Chrome* on the Chrome Web Store (free).



myPoint Light S



Custom Cursor for Chrome

For other platforms, please seek out similar utilities which turn the cursor into a full-screen crosshair.

Glide Pro is now ready for use.

Basic Operation

If you are using a PC with Microsoft PowerToys utility installed, first **press and hold** a switch plugged into socket 2 to turn the cursor into a full-screen crosshair. Once completed, you may not always need a switch in socket 2, but you will always need one plugged into socket 1.

Glide Pro works by scanning in the horizontal direction and then the vertical direction in four distinct phases:

1. **Full-screen movement in the horizontal direction.**
Press switch 1 to indicate approximate position and move to next phase.
2. **Fine movement in the horizontal direction to finalise the horizontal position.**
Press switch 1 to move to next phase.
3. **Full-screen movement in the vertical direction.**
Press switch 1 to indicate approximate position and move to next phase.
4. **Fine movement in the vertical direction.**
Press switch 1 to finalise the cursor position and Click at that position.

The speed of the cursor during both full-screen and fine movements may be set using the Settings button—see below. By default, it is set to the highest speed.

Additionally, the specific click function during phase 4 may be set using the Settings button. By default, it is set to Left Click.

*Note that while **Glide Pro** is scanning, it takes priority over a conventional mouse. When it is not scanning, a mouse may be used as normal. You may leave both the mouse and **Glide Pro** plugged in at all times.*

Stop Scanning and Centre the Crosshair/Cursor

It may sometimes prove useful to stop the scanning process and centre the crosshair/ cursor in the middle of the screen. This may be achieved at any time by a **short press** of a switch plugged into socket 2.

Turn Crosshair On/Off

It can sometimes be useful to turn the crosshair off and return to a conventional cursor, for example when another user would like to use a conventional mouse. This may be achieved by a **long press** on a switch plugged into socket 2. It may be turned back on again by another long press.

*Note this does not prevent **Glide Pro** from working while the crosshair is turned off, although it may prove more difficult to determine the correct position.*

This facility is available for crosshairs provided by PowerToys. If using myPoint Light S, it is possible to program the crosshair on/off function to be Cmd-Alt-P in the crosshair menu, which will allow a long press on socket 2 to turn the crosshair on and off in exactly the same way as on a PC using PowerToys. For other platforms, please use the settings on the computer/ app itself.

Cursor Speed

The speed of the cursor may be changed to suit individual requirements. There are four settings with the fastest being the default. To change the speed, press the Settings Button on the underside of your **Glide Pro** unit **briefly**. Each time you do so, you will hear a number of beeps. Four beeps indicates the fastest speed, one beep the slowest.

If you wish, you can make these changes during scanning so you can see the effect on cursor speed immediately. It's best to do this during full-screen scanning, either vertical or horizontal.

You can still use the mouse pointer speed setting on your computer to make changes, although the purpose of the speed setting in **Glide Pro** is to avoid making changes to the computer, which may be operated by numerous users.

Any changes you make to the speed are saved in memory and automatically recalled whenever **Glide Pro** is powered up, even when taking it to a different computer.

Click Setting

You can also choose the type of click that occurs on completion of scanning phase 4. By default, this is Left Click, but other options are available, according to Table 1.

Click Setting	No. Beeps
Left Click	1
Double Click	2
Right Click	3
Delayed Drag	4

Table 1: Click Settings

To change the Click Setting, **press and hold** the Settings Button on the underside of your **Glide Pro** unit. Each time you do so, you will hear a number of beeps indicating the new setting, by reference to Table 1.

Any changes you make to the Click Setting are saved in memory and automatically recalled whenever **Glide Pro** is powered up, even when taking it to a different computer.

Double Click may be used to launch an app, just as if the left button on a mouse is double clicked. However, this setting may prove cumbersome in other instances, for example it would click a button on and then immediately back off again.

On most computers there is a way to make a single click open apps and it is recommended that this option be enabled instead, allowing you to use Left Click to achieve almost all functions. In Windows, type File Explorer Options in the search box and the select it. The middle section is entitled 'Click items as follows' and is usually set to 'double click to open an item'. Select 'single click to open an item' instead and then click OK (See Figure 1).

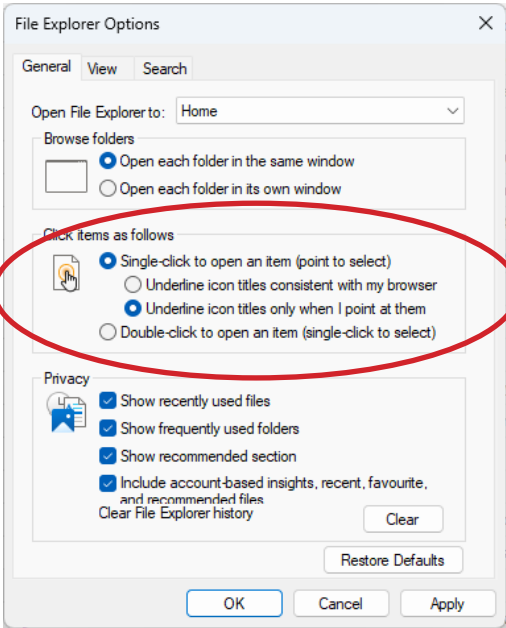


Figure 1: File Explorer Options

Sometimes it's useful to be able to latch the left click on so that you can move an icon around on screen, or perhaps while drawing. Latching left click is often called Drag or Drag Lock.

Glide Pro has a very useful Delayed Drag feature, see Table 1. When using this setting, if you press the switch on socket 1 briefly at the end of the scanning procedure, **Glide Pro** gives a momentary click of the left button, just like the Left Click option.

However, if you would like to turn on the Drag, press and hold the switch at the end of the scanning procedure and you will hear a beep, indicating that the Drag is being turned on. If the cursor is over an icon it will pick it up, allowing it to be moved to a new location using a new scanning procedure and then dropped in that location. Similarly, it could be used to draw a box in a drawing app or many other applications.

Troubleshooting

If your **Glide Pro** doesn't operate as you expect, please use the following guide to determine the cause. If, after following this guide, your unit still doesn't operate, please contact your supplier before returning it.

Symptom	Possible Cause/Remedy
I can only see a normal cursor, not a crosshair	On a PC, download and install PowerToys and then use a long press of a switch on socket 2 to turn on the crosshair. On a Mac, install myPoint Light S.
I can't use a standard mouse at the same time as Glide Pro	When Glide Pro is scanning, it takes priority over a mouse. When it's not scanning, a mouse can be used as normal. You can leave both plugged in at all times.
My cursor moves at a speed that doesn't suit my needs	Press the button on the bottom of Glide Pro briefly until you get the cursor speed you prefer.
My Glide Pro is set to Left Click but my apps don't open	On a Windows computer, make sure you have the Single Click option turned on in the File Explorer Options dialogue box.
I need to move an item elsewhere on screen. How can I do that?	Consider changing the Click Setting to Delayed Drag. Then press and hold the switch on socket 1 during the last phase of the scanning procedure, until you hear a beep. The Drag Lock is now on.

Maintenance

Your **Glide Pro** has no user serviceable parts. If maintenance proves necessary, please contact your supplier before returning it.

Warranty

Your **Glide Pro** is warranted for two years against defects in manufacture and component failure. The unit is designed for domestic and educational applications. Use outside of these areas will invalidate the warranty. Unauthorised repair or modification, mechanical abuse, immersion in any liquid or connection to incompatible equipment will also invalidate the warranty.

Microsoft, Windows, Apple, Mac and Chromebook are the brands names and/or trademarks of their respective owners, are used for illustrative purposes only, and are acknowledged.

Third party apps mentioned in this document are suggestions and not necessarily recommendations. It is your responsibility to evaluate the provider's authenticity and the app's fitness for purpose prior to downloading.



Product Page



www.pretorianuk.com/glide-pro

S040218 Iss 0

For use with firmware version 159 onwards

Unit 37 Corringham Road Industrial Estate
Gainsborough, Lincolnshire DN21 1QB UK
Tel +44 (0) 1427 678990 **Fax** +44 (0) 1427 678992

European Healthcare & Device Solutions Ltd.
Stratton House, Bishopstown Road, Cork T12 Y9TC. Republic of Ireland
(Do not use this address for correspondence with Pretorian).



www.pretorianuk.com